

Our ref:

Date:

Company name:

Telephone:

Address:

Postcode:

Email:

Office use only

DESP VIA

INV.No

PD

Blindshapers -

Custom Sloped / Multi Sloped

Benthin system only

Blinds draw to highest points only

Vane width 89mm 127mm

No Fabric

1Q2 Motor supplied with 2m cable
and two pin plug (shaver type)

Manual Controls

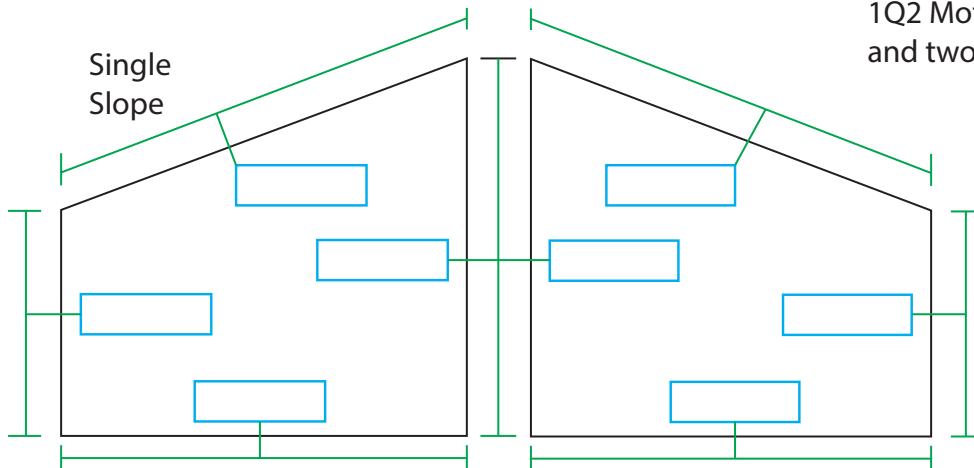
Somfy Handset Choice

Situo 1

Situo 5

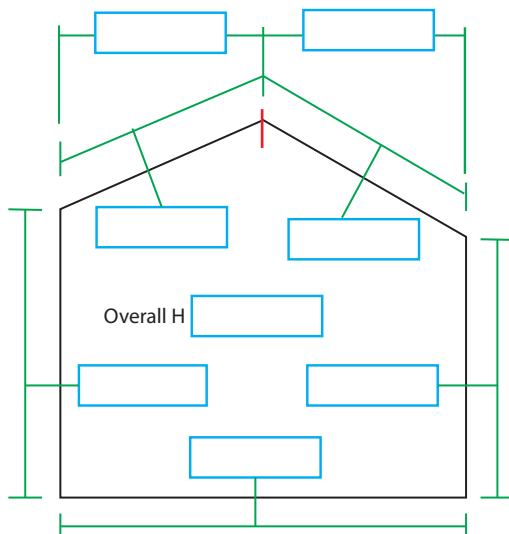
or Control switch Sonnese

Recess size or finished size



Two
Slope

In Two
Tracks



Please indicate
position of
controls using
circular buttons
on diagram.
Manual Controls
at lower edge
gives middle
coverage.

2m Cable

5m Cable

Manual Controls Length

Brackets Top Adjustable Face Fix

Motor position (if required)

Top of slope

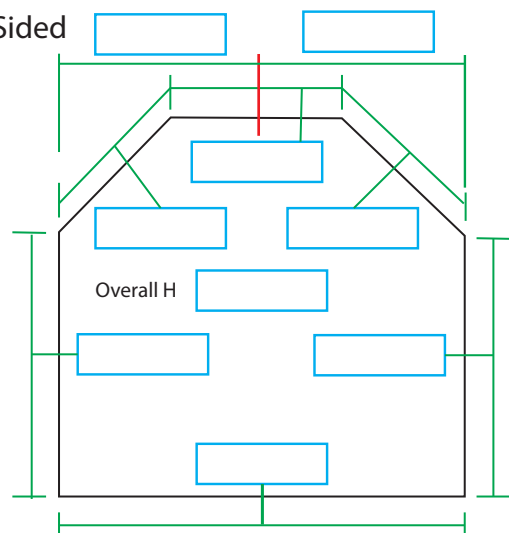
Lower end of slope

Motor Dimensions

255mm x 55mm x 27mm

Three Sided
Slope

In
Two
Tracks



sales@blindshapers.com

Blind Cord Loops Safety Caution EN13120

As members, we fully endorse the BBSA's Make it Safe code. Children or other vulnerable persons can be at danger from strangulation by unrestrained loops in cords and chains that are attached to window coverings. To avoid entanglement keep cords out of reach. Safety devices must be fitted and are supplied as standard. Move cots and furniture away from window coverings.